



SJ Light House Update

Outside of Outer light St. Joseph Michigan North Pier

Prior to NCP SiloxoSheild 2K



Post NCP SiloxoSheild 2K

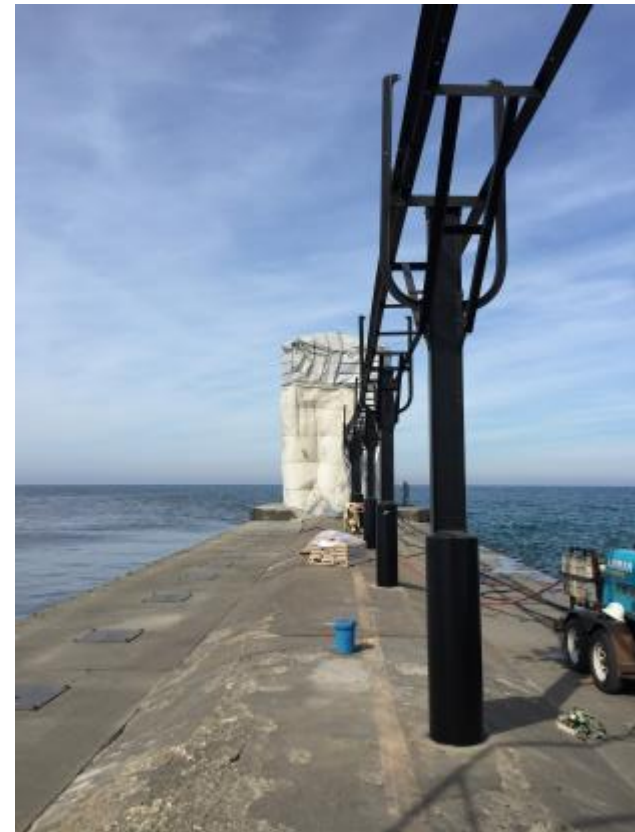


Catwalks at St. Joseph Michigan North Pier

Prior to NCP SiloxoSheild 2K



Post NCP SiloxoSheild 2K



Inside of Inner lighthouse St. Joseph Michigan North Pier

Inside Staircase prior NCP
SiloxoSheild 2K



Inside Staircase Post NCP
SiloxoSheild 2K

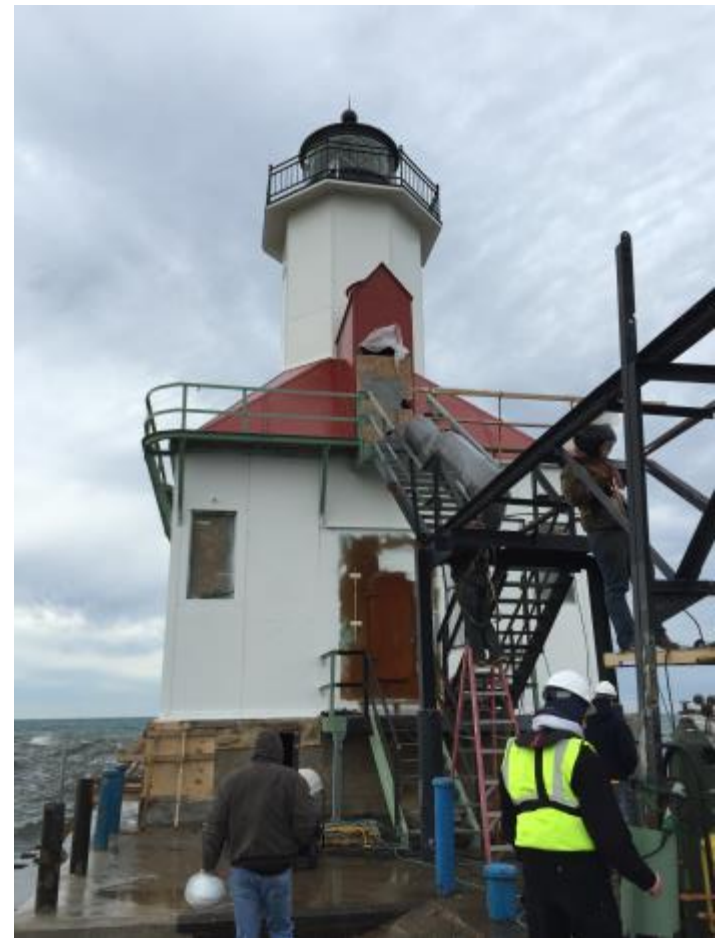


Outside of Inner lighthouse St. Joseph Michigan North Pier

Prior to NCP SiloxoShield 2K



Post NCP SiloxoShield 2K



NCP Coatings Inc.

Products Utilized on the St. Joseph Michigan North Pier Lighthouse Project

The Lighthouse components were first blasted to bare steel, repaired as required and then coated with the following NCP Coatings Inc. system. This system of paint coatings was designed to provide a long lasting protective coating surface for generations to come.

- **1st. Coat: N-6966A/B, Zinc Rich Epoxy Primer, MIL-DTL-24441D Formula 159**
- **2nd. Coat: N-6237A/B, Epoxy Polyamide Intermediate Primer, MIL-DTL-24441D Type III Formula 150**
- **3rd. Coat: NCP Coatings new SiloxoShield 2K polysiloxane technologies developed jointly with Naval Research Laboratories**

